

Un poco adagio e affettuoso

Musical notation for the first system, measures 1-8. The key signature has one flat (B-flat) and the time signature is 2/4. Measure 1 starts with a piano dynamic marking *[p]*. Measures 3 and 7 contain triplets. The system ends with a repeat sign.

Var. I

Musical notation for the first system of Variation I, measures 9-18. Measure 9 is marked with a first ending bracket. The system ends with a repeat sign.

Musical notation for the second system of Variation I, measures 19-26. Measure 19 is marked with a first ending bracket. The system ends with a repeat sign.

Musical notation for the third system of Variation I, measures 27-31. Measure 27 is marked with a first ending bracket. The system ends with a repeat sign.

Musical notation for the fourth system of Variation I, measures 32-36. The system ends with a repeat sign.

Var. II

Musical notation for the first system of Variation II, measures 37-44. Measure 37 is marked with a first ending bracket. The system ends with a repeat sign.

Musical notation for the second system of Variation II, measures 45-54. Measure 45 is marked with a first ending bracket. Measure 52 is marked with a second ending bracket. The system ends with a repeat sign.

Var. III

Musical notation for the first system of Variation III, measures 55-62. Measure 55 is marked with a first ending bracket. The system ends with a repeat sign.

Musical notation for the second system of Variation III, measures 63-72. Measure 63 is marked with a first ending bracket. Measure 70 is marked with a second ending bracket. The system ends with a repeat sign.

73



79



86



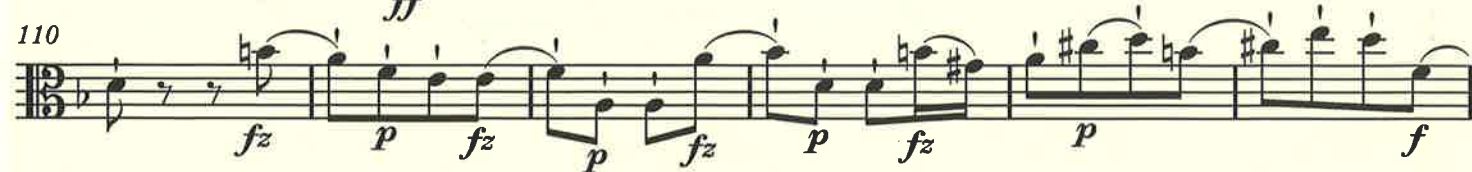
94



103



110



116



Menuet alla Zingarese

Allegretto



7



13



Trio

21



29



Menuet da Capo

Presto e scherzando

Musical score for Viola Op. 20 No. 4/iv, measures 1-57. The score is in 3/8 time with a key signature of one sharp (F#). The tempo and character are marked "Presto e scherzando".

Measures 1-6: First ending (1), dynamic *f*.

Measures 7-12: Second ending (2), trill (tr), first ending (1).

Measures 13-17: Continuation of the melodic line.

Measures 18-21: Rapid sixteenth-note passages.

Measures 22-25: Rapid sixteenth-note passages, dynamic *p*.

Measures 26-30: Rapid sixteenth-note passages, dynamic *f*.

Measures 31-35: Rapid sixteenth-note passages.

Measures 36-43: Rapid sixteenth-note passages.

Measures 44-49: First ending (1) and second ending (2).

Measures 50-56: Continuation of the melodic line.

Measures 57: Final measure of the page.

62

67

72

78

85

90

96

100

105

110

116

121

125